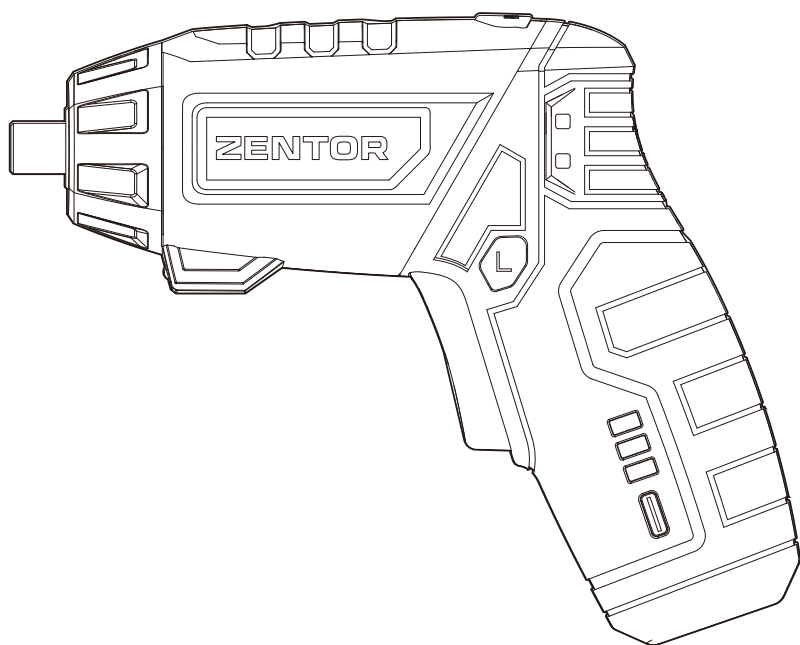


# ZENTOR

## ZT160



**EN** Electric Precision Screwdriver

## 4V rechargeable lithium battery screwdriver



**Warning! Read all warnings and all instructions, diagrams and regulations.** Failure to follow the warnings and instructions below may result in electric shock, fire and/or serious injury.

**All warnings and instructions should be stored for future reference.**

The term "power tool" refers to mains-operated (corded) power tools or battery-operated (cordless) power tools in all the following warnings.

### a) Work area safety

- 1) Keep work area clean and well lit.**  
A messy and dark working area can cause accidents.
- 2) Do not operate power tools in explosive environments, such as in the presence of flammable liquids, gases or dust.**  
Sparks produced by power tools may ignite the dust or gases.
- 3) Keep children and bystanders away before operating the power tools.**  
Distraction during working may cause the operator to lose control of the power tool.

### b) Electrical safety

- 1) The plug of power tools must match the socket. Never modify the plug in any way. Power tools that require grounding cannot use any conversion plugs.** Use of unmodified connector plugs and their matching sockets helps reduce the risk of electric shock.
- 2) Avoid bodily contact with the grounded surfaces, such as pipes, heat sinks and refrigerators.** The risk of electric shock may increase if your body comes into contact with the grounding surfaces.
- 3) Do not expose power tools to rain or damp environments.** Ingress of water into the power tools may increase the risk of electric shock.
- 4) Do not abuse the power cords. Never transport and pull the power tools or remove the plugs with power cords. Keep the wires away from heat sources, oil, sharp edges, or moving parts.**  
Damaged or twisted cords may increase the risk of electric shock.
- 5) When the power tool is used outdoors, use the external cords suitable for outdoor use.** Use of a cord suitable for outdoor use will reduce the risk of electric shock.

- 6) If it is unavoidable to operate the power tool in a damp location, a residual current operated protective device (RCD) should be used.** The use of RCD can reduce the risk of electric shock.

Note: The term "Residual Current Device (RCD)" can be replaced by the terms "Ground Fault Circuit Interrupter (GFCI)" or "Earth Leakage Circuit Breaker (ELCB)".

### c) Personal safety

- 1) Stay alert, watch what you are doing and use common sense when operating the power tool. Do not use a power tool while you are tired or under the influence of drugs, alcohol, or medication.** A moment of inattention while operating power tools may result in serious personal injury.
- 2) Use personal protective equipment. Always wear protective goggles.**  
Protection devices, such as dust masks, non-slip safety shoes, hard hats, and hearing protection devices, when used under appropriate conditions, can reduce the risk of personal injury.
- 3) Avoid accidental starts. Ensure that the switch is in the off position when connecting the power supply and/or battery pack, picking up or transporting tools.** Placing your fingers on a switch that has been turned on or inserting the plug while the switch is turned on may cause danger.
- 4) Remove any adjusting keys or wrench before turning the power tool on.** A wrench or a key that is left attached to a rotating part of the power tool may result in personal injury.
- 5) Do not overextend your hands. Always maintain proper footing and body balance.** In this way, the power tool can be effectively controlled in unexpected situations.
- 6) Dress properly. Do not wear loose clothing or jewelry. Keep your clothing, gloves and hair away from moving parts.** Loose clothes, jewelry, or long hair may get caught in moving parts.
- 7) If devices are provided for the connection to dust extraction and collection facilities, ensure these are properly connected and used.** Use of these facilities can reduce dust-related hazards.

### d) Use and precautions of power tools

- 1) Do not abuse the power tools. Use the correct power tools for your application.** The correct power tool will do the job better and safer.

- 2) **Do not use the power tool if the switch does not turn it on and off.** Any power tool that cannot be controlled with the switch is dangerous and must be repaired.
- 3) **Before making any adjustments, changing accessories or storing power tools, the plug must be unplugged from the power supply and/or the battery case must be disconnected from the tool.** This protective safety measures will reduce the risk of starting tool accidentally.
- 4) **Store idle power tools out of the reach of children and do not allow persons unfamiliar with the power tool and these instructions to operate the power tool.** Power tools are dangerous for untrained users.
- 5) **Maintain power tools. Check whether the moving parts are properly adjusted or stuck, check the damage of the parts and other conditions that affect the operation of power tool.** If damaged, the power tool should be repaired before use. Many accidents are caused by poorly maintained power tools.
- 6) **Keep cutting tools sharp and clean.** Properly maintained cutting tools with sharp cutting edges are less likely to get stuck and are easier to control.
- 7) **Select power tools, accessories and tool bits, etc., in the manner specified in instruction manual, taking into account the working conditions and the work to be performed.** Using the power tool for operations other than their intended purpose could result in a hazardous situation.

#### e) Safety warnings for screwdrivers and impact wrenches

- 1) **When operating in areas where fasteners may come into contact with hidden wires or its own flexible cord, hold the tool through the insulating grip.** When fasteners come into contact with live wire, the exposed metal parts of the tool will become electrically live, causing the operator to suffer electric shock.

#### f) Use and precautions of battery-operated tools

- 1) **Charge only with the charger specified by the manufacturer.** There is a fire hazard when using a charger suitable for a certain battery pack on another battery pack.
- 2) **Only use power tools equipped with dedicated designed battery packs.** Using other battery packs may result in damage and fire hazards.

- 3) **When the battery pack is not in use, keep it away from other metal objects such as paper clips, coins, keys, nails, screws or other small metal objects, in order to prevent one end of the battery pack from connecting to the other end.** A short circuit at the end of the battery pack can cause combustion or fire.
- 4) **If the battery is abused, liquid may spill out of the battery; avoid contact with it. If you accidentally come into contact with the liquid, rinse the affected area with water. If the liquid gets into eyes, please seek medical assistance.** The liquid splashed out of the battery can cause corrosion or combustion.

#### g) Repair

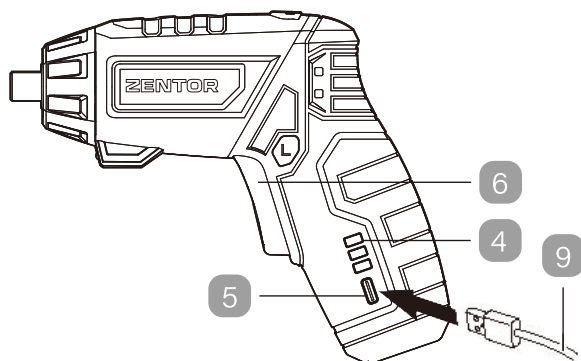
- 1) **Ask the professional maintenance staff to repair the power tools by using the special spare parts.** This will ensure the safety of the power tools to be repaired.

#### Special precautions

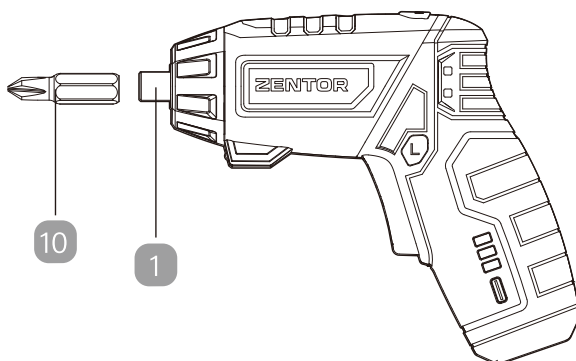
- 1) **Do not take it lightly because of familiarity gained from frequent use of tools and ignore tool safety principles.** A careless action can cause severe injury within a fraction of a second.
- 2) **Keep the handle and the gripping surface dry, clean and free of grease.** Slippery handles do not allow for safe handling and control of the tool in unexpected situations.
- 3) **Do not use damaged or modified battery packs or tools.** Damaged or modified battery packs may produce unpredictable results, leading to fire, explosion or injury.
- 4) **Do not expose the battery pack to fire or high temperatures.** If the battery pack is exposed to fire or high temperatures above 130 °C, it may cause an explosion.
- 5) **Never repair a damaged battery pack.** The battery pack can only be repaired by the manufacturer or its authorized repair service provider.
- 6) **Always firmly hold the power tool when using it.** Prevent the reaction force generated by tools from injuring people. The torque will become greater especially when the hole is about to be drilled through.
- 7) **Do not open the battery pack without authorization.** Otherwise, it may cause danger.
- 8) **The charger must be kept clean.** It can easily cause electric shock if dirt accumulates on the charger.
- 9) **The charger and tools must be checked before use.** It cannot be used again if a malfunction is found.

## Product Overview

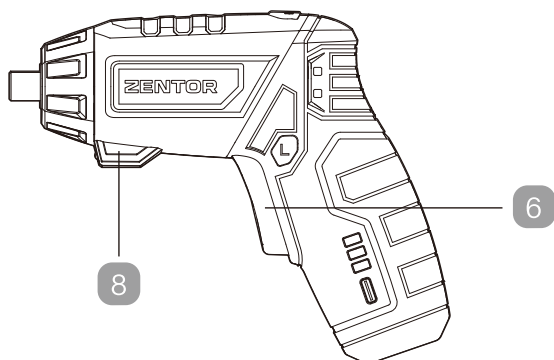
1



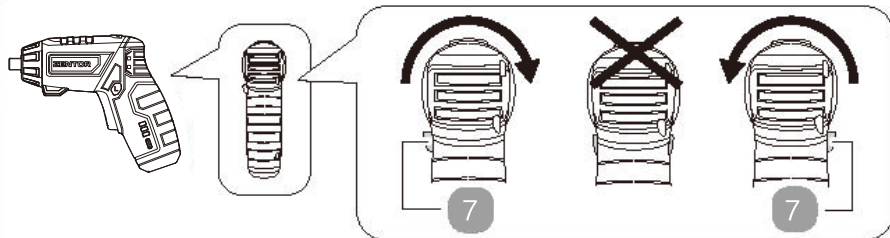
2



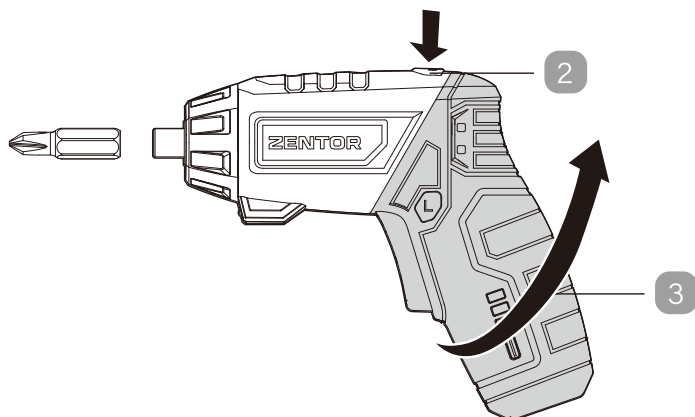
3



4



5



### Part name

1	Socket in the head of the screwdriver	6	Switch trigger
2	Release button	7	Rotation direction selection lever / Safety lock
3	Handle	8	LED Work Light
4	Charging Indicator	9	USB Charging Cable
5	USB charging port (TYPE C)	10	Bit

Note: This product does not include a charger.

### Technical Specification

Model	Voltage	Battery Type	RPM	Max torque	Charging Indicator
ZT160	4V	1500 mAh lithium-ion battery	230 RPM	3 Nm	Yes

## Instructions for use

### 1. Charge the screwdriver (Figure 1)

The tool must be fully charged before its first use.

- a) Insert the Type A end of the USB charging cable into the power supply's USB socket, and then insert the Type C end of the USB charging cable into port 5 of the machine.
- b) The red light in the charging indicator stays on while charging.
- c) If it is fully charged, the red light goes off and the green light comes on.



#### Note

- 1 Please read the safety instructions first and then follow them.**
- 2 Please make sure that the charging cable is not knotted and has no severe bends.**
- 3 During the charging process, the battery will generate heat.** This is normal.
- 4 When the battery runs out of power and the tool cannot work properly, the battery should be charged.** Do not continue to use this tool at this moment, otherwise, it will reduce the battery's service life.
- 5 Overcharging will shorten the battery life.** Do not allow the battery to continue charging after it is fully charged.
- 6 During storage, even if the tool is not used, the battery's power will gradually decrease.** To maintain battery performance, charge the battery at least once every three months during long-term storage or non-use.
- 7 It is recommended not to charge in an environment where the temperature is below 0 °C or above 45 °C.**

### 2. Assembly and disassembly of the bit (Figure 2)

\*Install the bit: Insert the bit into the screwdriver socket until it is in place.

\*Remove the bit: Simply pull the bit directly out of the bit socket.

### 3. Starting and stopping the screwdriver (Figures 3-4)

1. Push the rotation direction selection lever / safety lock 7 to the left or right (Left: rotate clockwise; Right: rotate counterclockwise)
2. Press and hold the switch trigger 6 to start the screwdriver. The work light 8 will light up during operation.
3. Release the trigger 6 of the screwdriver and push the rotation direction selection lever / safety lock 7 to the middle position.

### 4. Handle adjustment (Figure 5)

This product can be locked in two handle positions: the straight handle position and the pistol grip position.

- Straight handle position: Press the release button 2 and turn the handle 3 upwards simultaneously. You will hear a click when the handle is locked in place.
- Pistol grip position: Press the release button 2 and turn the handle 3 upwards simultaneously. You will hear a click when the handle is locked in place.

## Cleaning and Maintenance Instructions

Before performing any operation on the machine (such as maintenance, tool replacement, etc.) and during storage and transportation, please set the rotary direction switch to the middle position. Accidentally turning on the power switch may cause injury.

For safe and proper operation, please keep the machine and air vents clean.

## Environmental Disposal Instructions

Environmental protection information

For families, information on environmentally friendly and safe disposal of electrical and electronic equipment can be found in the "Administrative Measures for Pollution Control of Electronic Information Products" and the "Regulations on the Recycling and Disposal of Waste Electrical and Electronic Products".



The symbol on electrical and electronic products and the relevant documents attached to the products indicate that such products cannot be discarded together with ordinary household waste. Such products must be sent to the designated recycling points for free recycling, processing and reuse. In some countries, it is also possible to return the product to the point of sale and purchase a new replacement. By properly handling this product, you can help protect precious natural resources and reduce the negative impacts on human health and the environment caused by irresponsible waste disposal and management. Please contact the local environmental protection department.

## Disposal of Used Batteries

Used batteries cannot be disposed of or discarded together with ordinary household waste. According to relevant laws and regulations, used batteries must be sent to battery recycling centers or battery management companies. Failure to comply with these requirements may result in fines or other penalties.

# ZENTOR

## Product Warranty Card

### Dear users :

Thank you for buying our products. In order to ensure your profit, users who buy our products can contact local distributor or Specified repair stations with invoice and warranty cards if the product failures due to quality problems.

### Warranty Notice:

1. From \_\_\_\_\_ (Year/Month/Day) to \_\_\_\_\_ (Year/Month/Day), If the failure happen in normal use, our company will provide free warranty, parts replacement and other services according to the failure situation.
2. This warranty card and purchase invoice are the voucher of after-sales service provided by our company to customers. The card must be detailed only after filling in the following form and affixing the official seal with the distributor.
3. In one of the following cases, free warranty service will be invalid, and maintenance fees will be required:
  - (1) Exceed the expiration date.
  - (2) Failure or damage caused by not following the requirements of the product manual, maintenance or improper storage.
  - (3) Failure or damage caused by disassembling, repairing or modification of the product without the permission of our company.
  - (4) Machine breakdown or damage caused by force majeure.
  - (5) Consumable accessories.

This card is issued with the product. One card for one machine, to ensure that you can fully enjoy the right to free warranty service provided by the company, please keep this card properly, lost will not be replaced.

Purchase Date: \_\_\_\_\_ (Year/Month/Day)

## Product Certificate

Inspector:

01

Date of manufacture:

NINGBO DELI TOOLS CO., LTD.  
No. 128 Chezhan West Road, Huangtan Town,  
Ninghai County, Ningbo, Zhejiang, China  
+86 574 87562689  
MADE IN CHINA

